



THE LOWRY

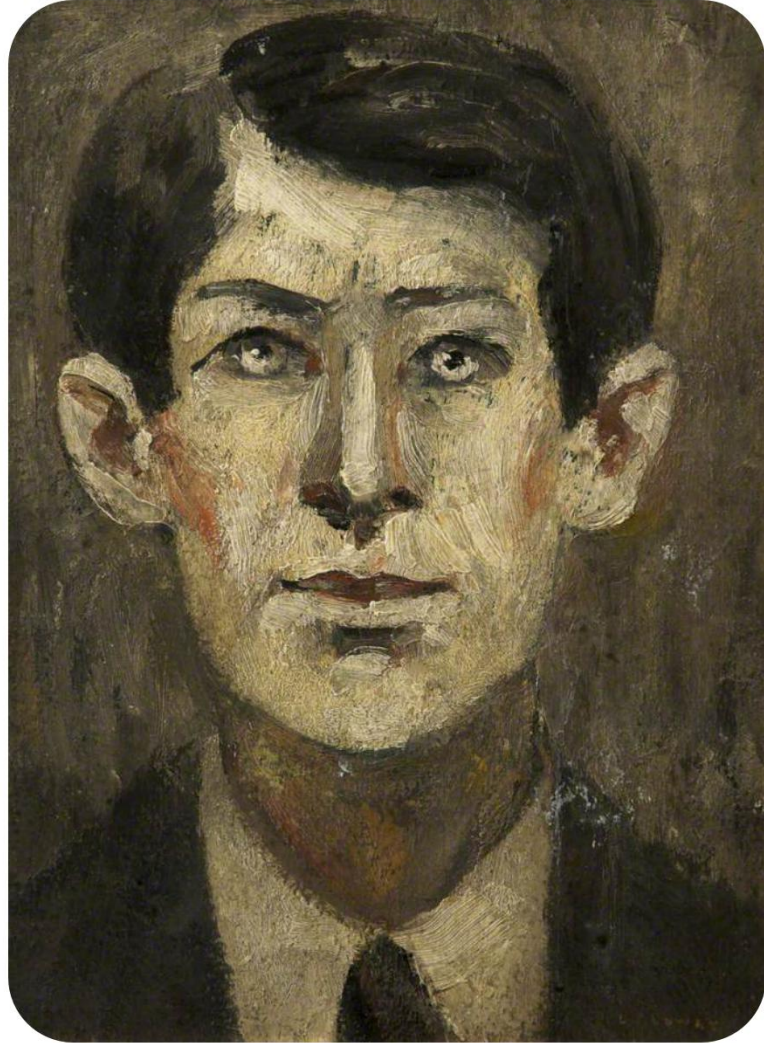




THE ARTIST

- british painter
- lived near Manchester
- intermittently art schools from 1905 to 1925
- painting was done mainly at night after his day's work
- the best collection of his work is in the Lowry museum







THE LOWRY



main entrance



THE LOWRY

Their vision

-world-class art centre in a creative and cultural quarter

Their Values: - be honest
- respecting everyone
- try to get the most from

the Lowry

work hard

- ambitious and strive,



How to find them

Pier 8, The Quays,
Salford, M50 3AZ

Box Office: 0843 208 6000

Groups Line: 0843 208 6003

Access Line: 0161 876 2183

Registered Charity No: 1053962

A wide-angle landscape photograph of Scotland. The foreground shows a rocky outcrop with sparse vegetation. The middle ground features rolling hills with patches of green and brown grass, and a small loch. In the background, a larger loch is visible, with the sun low on the horizon, creating a golden glow and long shadows. A prominent, jagged rock formation stands on the right side of the image. The sky is filled with dramatic, layered clouds.

Have fun in
Scotland

Marco, Markus, Vincent, Nik